

An aerial photograph of a dense urban neighborhood, likely in Boston, showing rows of red brick townhouses with dark roofs. Some trees with green and yellow foliage are visible between the buildings. A semi-transparent white rectangular box is centered over the image, containing the event title and date.

WHO IS OUR NEIGHBOR?

**EPISCOPAL DIOCESE OF THE CENTRAL GULF COAST
SENIOR WARDENS MEETING
SATURDAY, MAY 11, 2019**

WHO IS KAMMY YOUNG & WHY IS SHE HERE?

Episcopal Priest for 27 years – 20 years serving congregations

Director of Contextual Education at School of Theology, Sewanee for 6 years -
Consulting with dozens of Episcopal congregations engaging missional projects with their communities.

Canon Missioner of Development for the Diocese of the Central Gulf Coast – focusing on Evangelism & Mission Engagement

- 6 month beta testing and yearlong grant with FaithX and DataStory for Faith Communities

Mother of two young adult children in Pensacola, grandmother of 8 month old – focusing on what is most urgent, important and necessary for next generation of church

A MAP FOR TODAY'S MISSIONAL JOURNEY

Presentation on Diocesan Missional Assessment and Strategizing (10 minutes)

“Going Around the Table” (10 minutes) – brief feedback on what’s exciting/hopeful and/or concerns/worries

Q&A/Discussion

Next Steps

A cinematic photograph of Jesus and his twelve apostles walking along a dusty path in a rugged, rocky desert landscape. Jesus, with long brown hair and a beard, wears a white robe under a brown cloak and is placing his hand on the shoulder of a disciple in a grey robe. The other disciples, dressed in various robes and head coverings, follow them. The scene is bathed in warm, golden light, suggesting late afternoon or early morning. A semi-transparent white banner is overlaid across the middle of the image, containing the text "Jesus taught his disciples".

Jesus taught his disciples

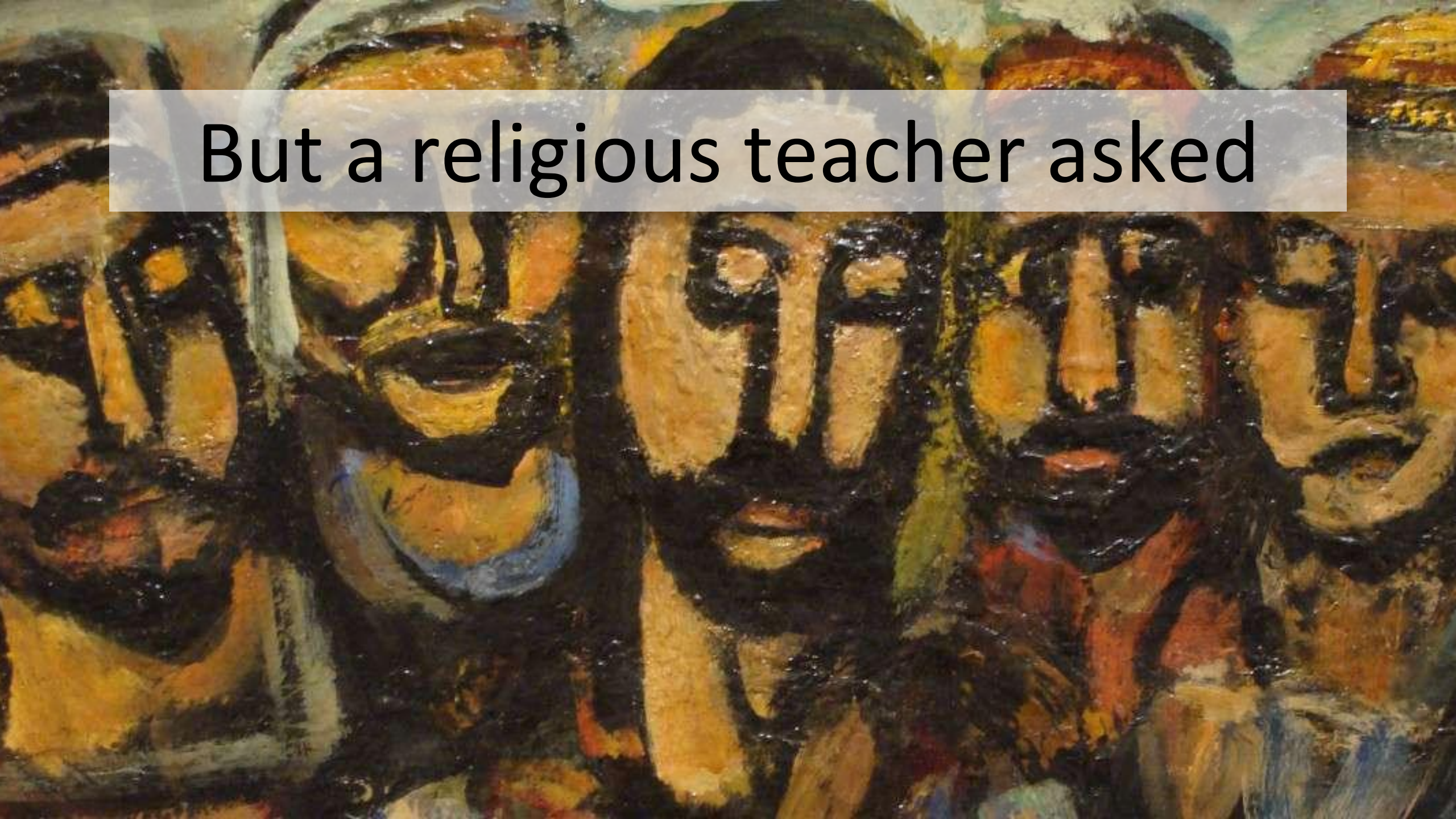
A cinematic photograph of Jesus walking with his twelve apostles through a rocky, arid landscape. Jesus, with long brown hair and a beard, wears a white robe under a brown cloak and places his hand on the shoulder of a man in a grey robe. The apostles, dressed in various robes and head coverings, follow him. The scene is bathed in warm, golden light, suggesting late afternoon or early morning. A semi-transparent white rectangular box is overlaid on the lower half of the image, containing the text.

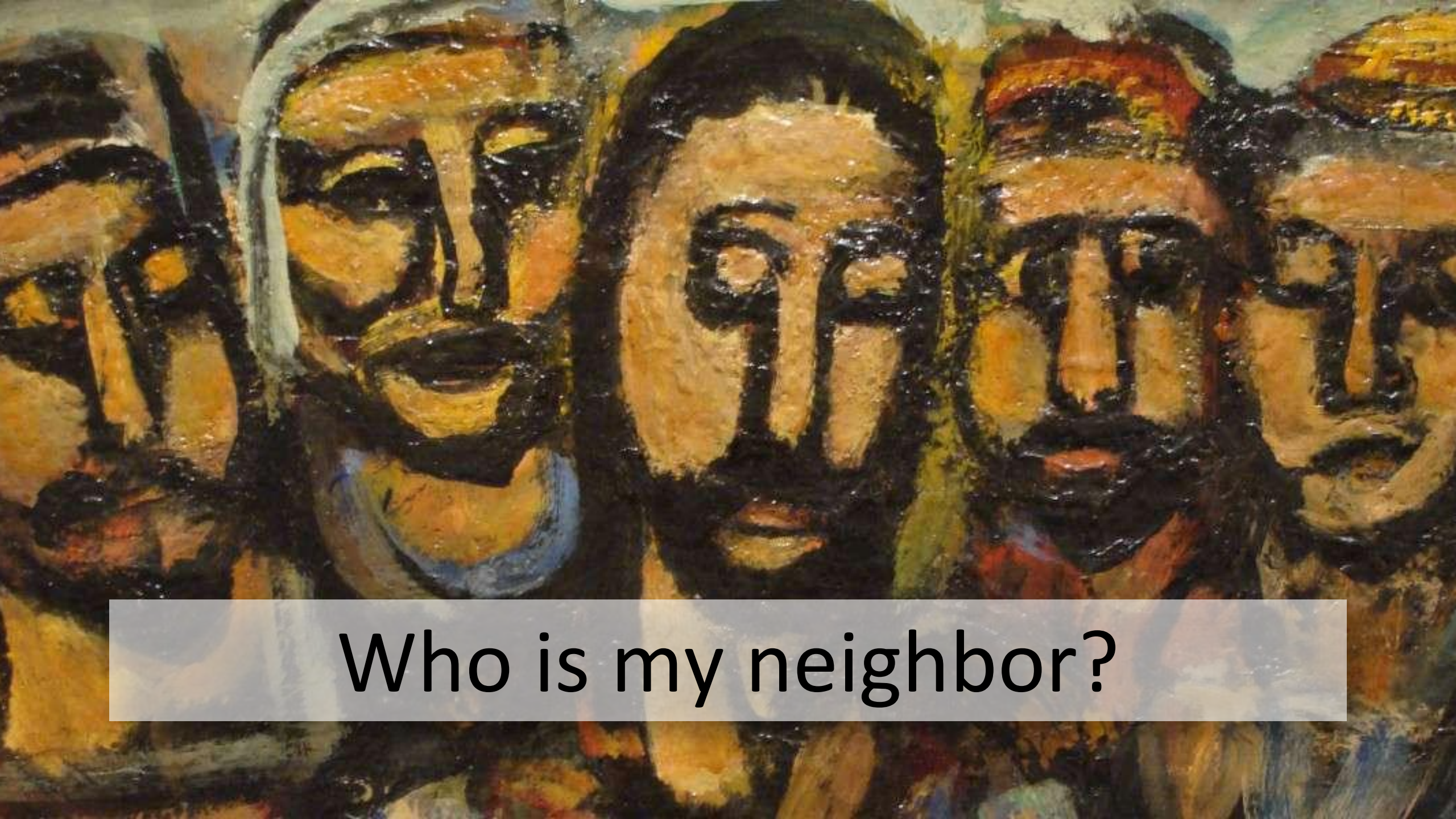
Love God
with your entire being



Love your neighbor
as though your neighbor was you

But a religious teacher asked





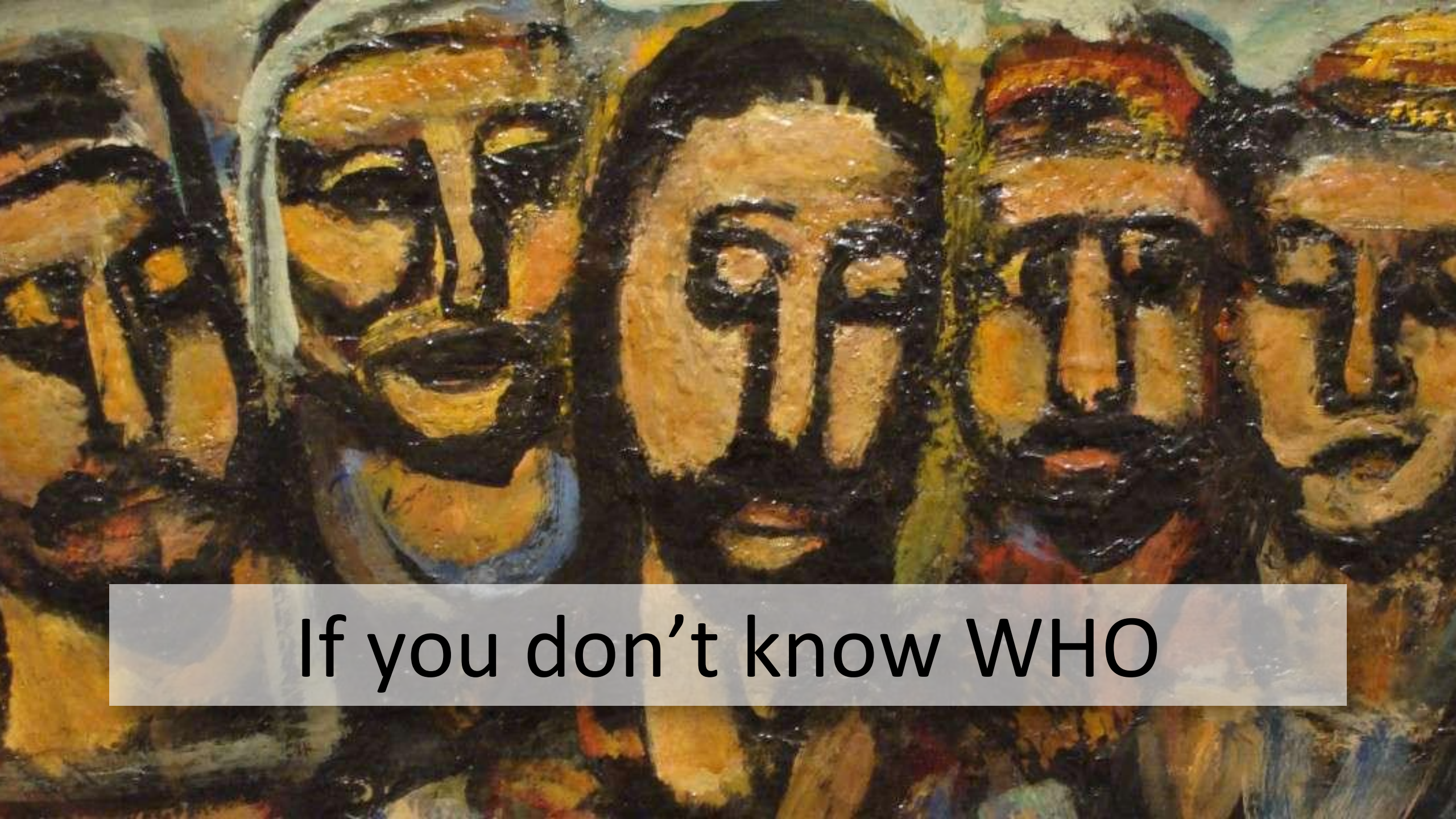
Who is my neighbor?

An abstract painting featuring several faces rendered in a distorted, expressive style. The faces are composed of thick, textured brushstrokes in shades of yellow, orange, and black. The background is a complex mix of dark, swirling colors, including black, brown, and hints of red and blue. The overall composition is dense and chaotic, with the faces appearing to emerge from the swirling background. A semi-transparent white rectangular box is overlaid on the upper portion of the image, containing the text "It was an important question".

It was an important question

An abstract painting featuring several faces rendered in a distorted, expressive style. The faces are composed of thick, textured brushstrokes in shades of yellow, orange, and brown, set against a dark, swirling background. The central face is the most prominent, with large, dark eyes and a wide, open mouth. Other faces are visible around it, some partially obscured or more abstract. The overall effect is one of intense emotion and psychological complexity.

Because it's hard to now HOW



If you don't know WHO

A cinematic photograph of Jesus walking through a rocky, hilly landscape with a group of people. Jesus, with long brown hair and a beard, wears a light-colored tunic and a brown outer robe. He is gesturing with his right hand towards a man in a grey robe. The group consists of several men and one woman, all dressed in traditional Middle Eastern attire like robes and head coverings. The scene is set in a dry, rocky environment under bright, natural light.


Jesus responded with a story

about a outcast





who be came a neighbor



by noticing a person in need



and treating him like family



We need to ask WHO, too



Do they have kids?

What are their names?

Where do they go to school?

Where do they work?

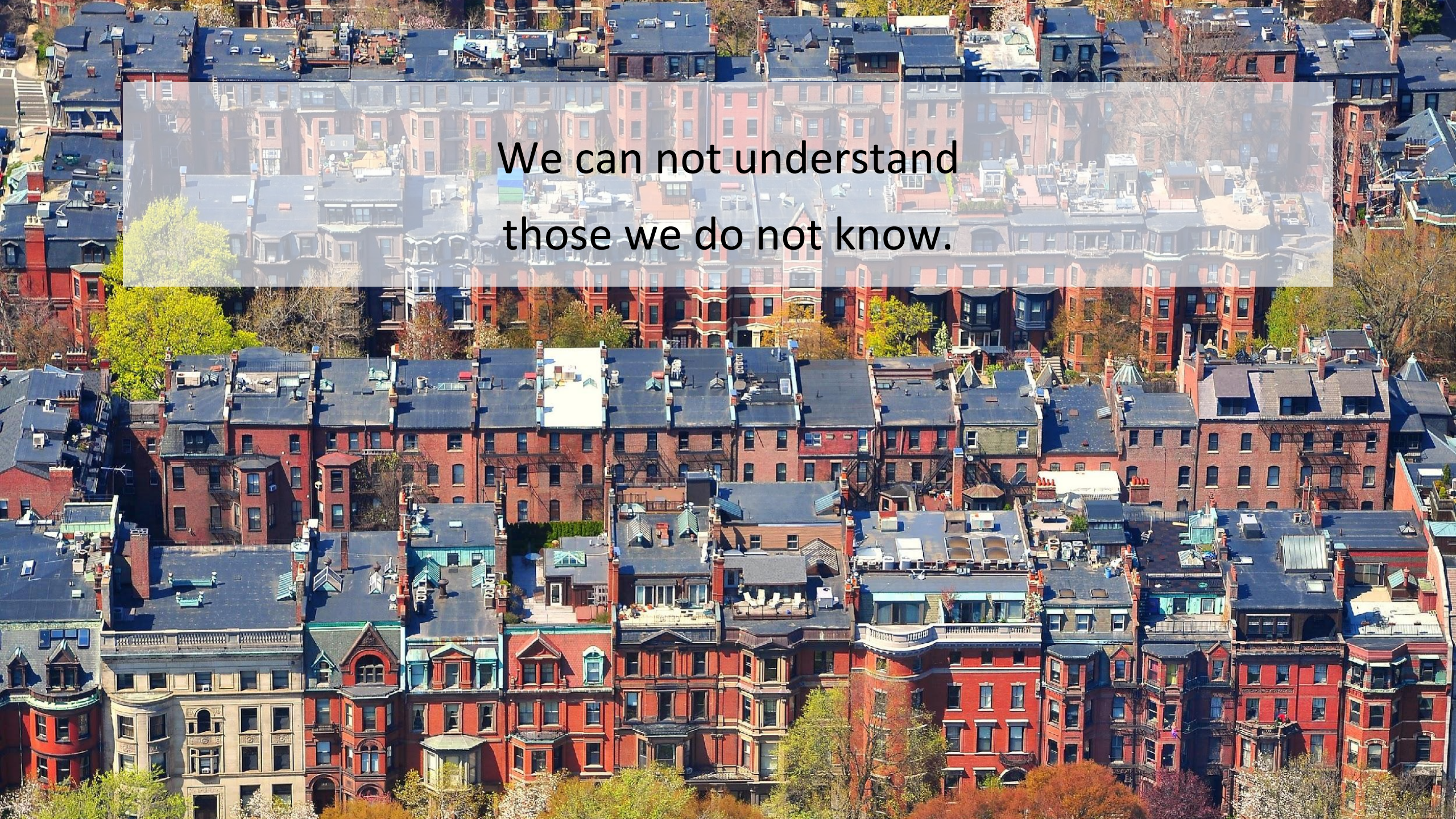
How can I help them?

Are they happy?

Who is my Neighbor?

Do they know Jesus?

How can I pray for them?

An aerial photograph of a dense urban neighborhood, likely in New York City, showing rows of red brick row houses. The houses are tightly packed, with many featuring dark roofs and fire escapes. Some houses have white-painted upper floors or bay windows. The scene is captured from a high angle, looking down on the rooftops and facades of the buildings. A semi-transparent text box is overlaid in the upper center of the image.

We can not understand
those we do not know.

An aerial photograph of a dense urban neighborhood, likely in New York City, featuring rows of red brick townhouses with dark roofs. A semi-transparent rectangular box is centered over the middle of the image, containing the text "We cannot love those we do not understand." in a black, sans-serif font. The bottom of the image has a dark blue gradient bar with faint circular patterns on the left side.

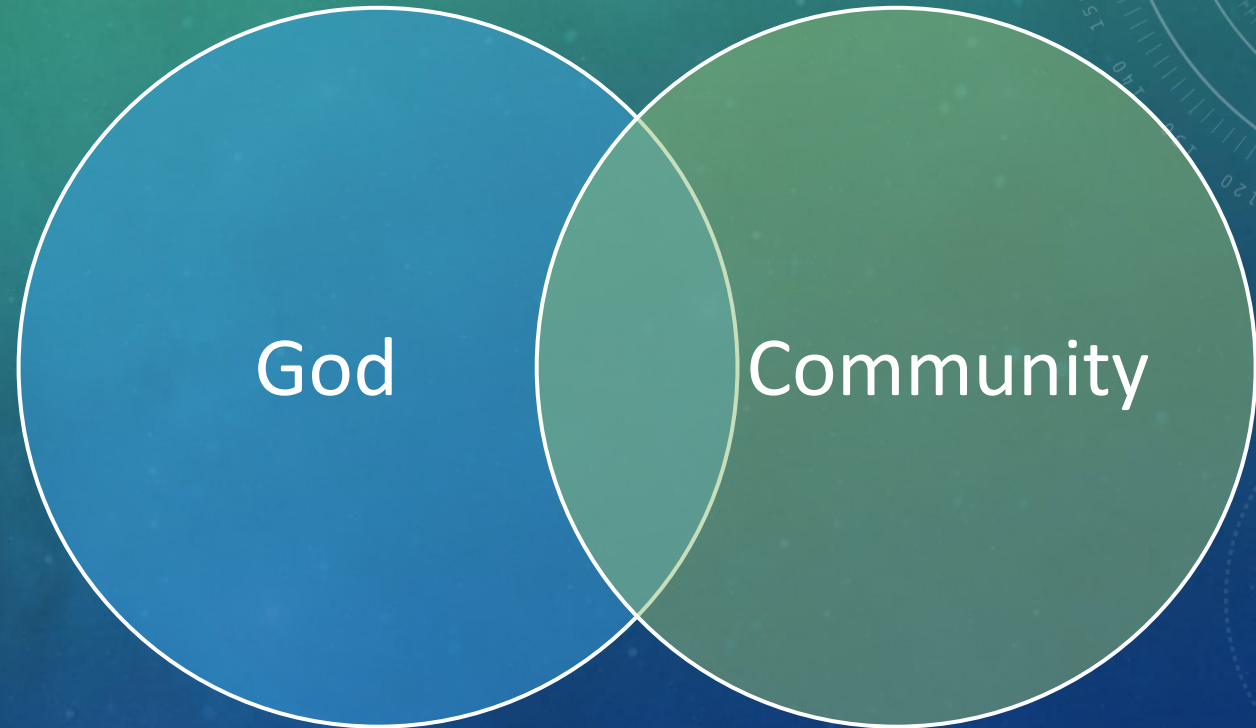
We cannot love
those we do not understand.

An aerial photograph of a dense urban neighborhood, likely in Boston, showing rows of red brick row houses with dark roofs. The houses are tightly packed, and some have fire escapes visible. There are some trees with green and yellow foliage interspersed among the buildings. A semi-transparent white rectangular box is overlaid on the lower half of the image, containing the text.

We cannot create Christian community
among those we are not prepared to love.

MISSIONAL AWARENESS

Missional assumes God is already at work in the community.



MISSIONAL INTENTIONALITY

A holy symbiosis
(collaboration)
between congregation,
community, and God.



MISSIONAL CONTEXT ANALYSIS

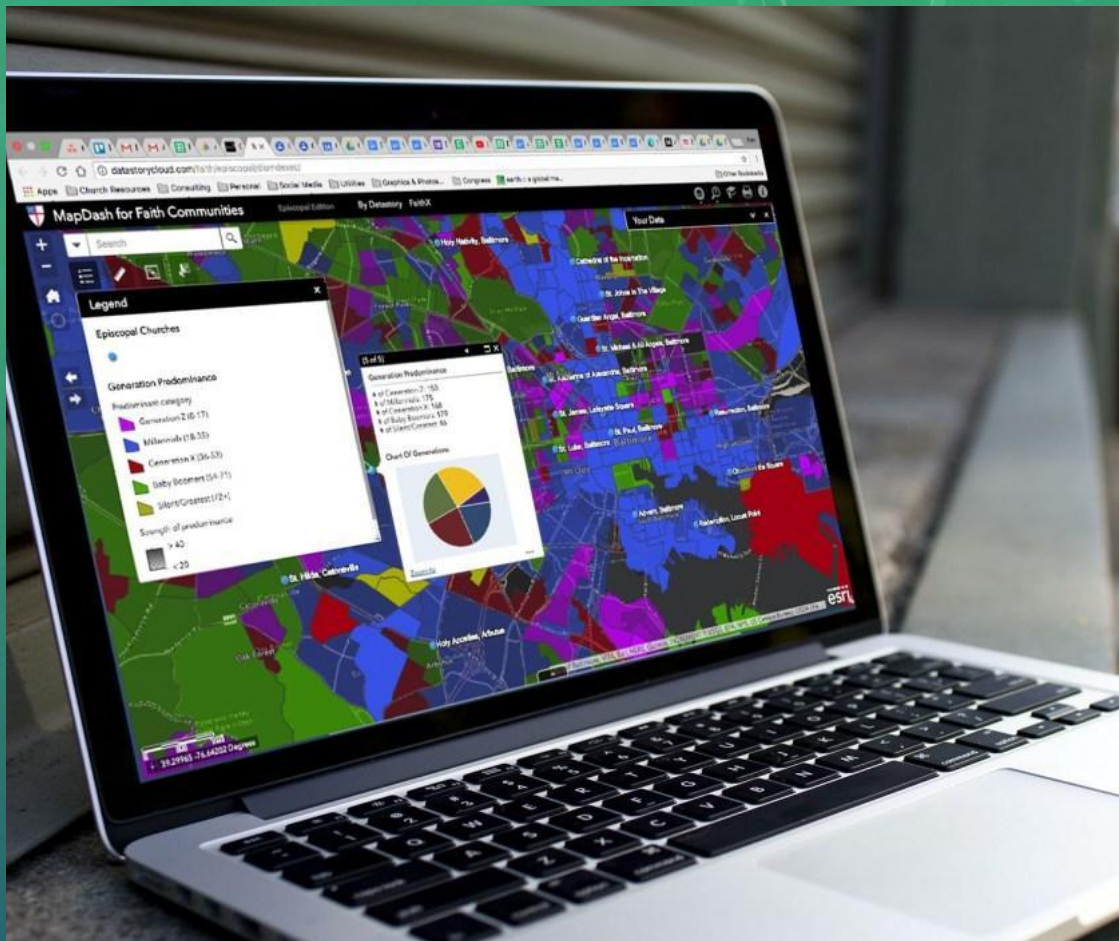
Getting to know
your neighborhoods
in three ways



STRATEGIC MISSIONAL PLANNING

(Seven Questions)

- 1 – What Is Our Neighborhood?**
- 2 – Who Are Our Neighbors?**
- 3 – What Are Our Neighborhood's Issues?**
- 4 – What Are Our Neighborhood's Resources**
- 5 – What Does It All Mean?**
- 6 – What Does It Say About Our Congregation?**
- 7 – Where Do We Go from Here?**



*Interactive software tool
Congregational vitality
Congregational sustainability
Mission opportunity*

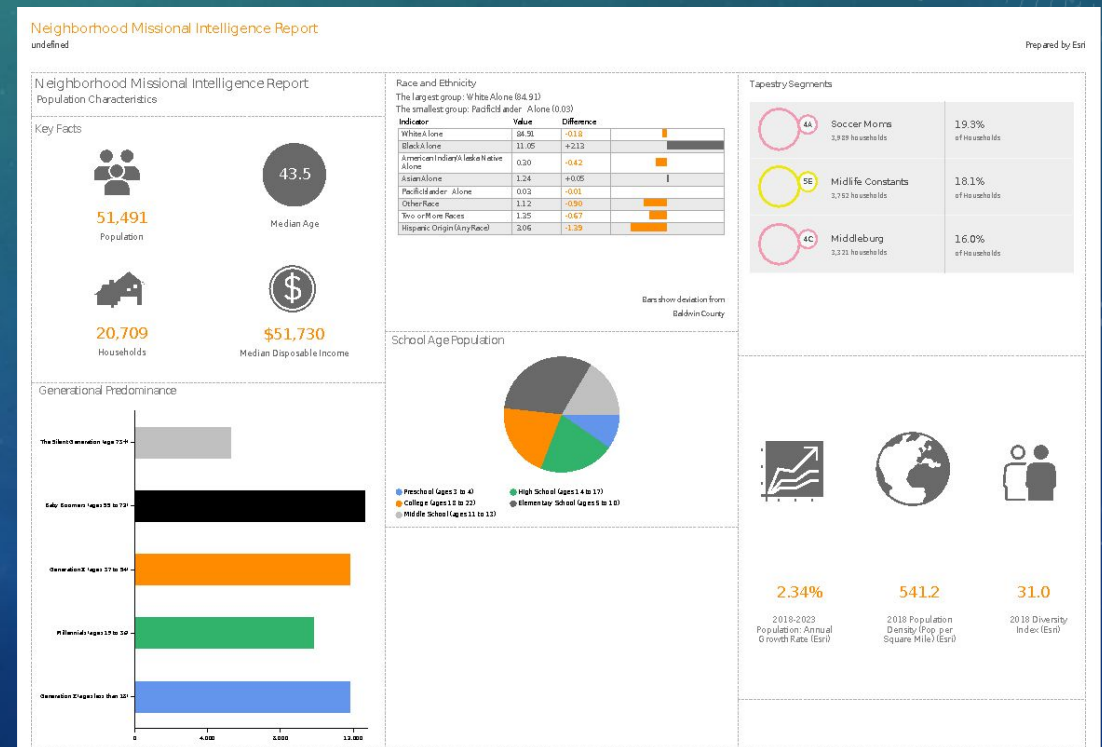
Province IV DataStory Evangelism Project

LOGIN:

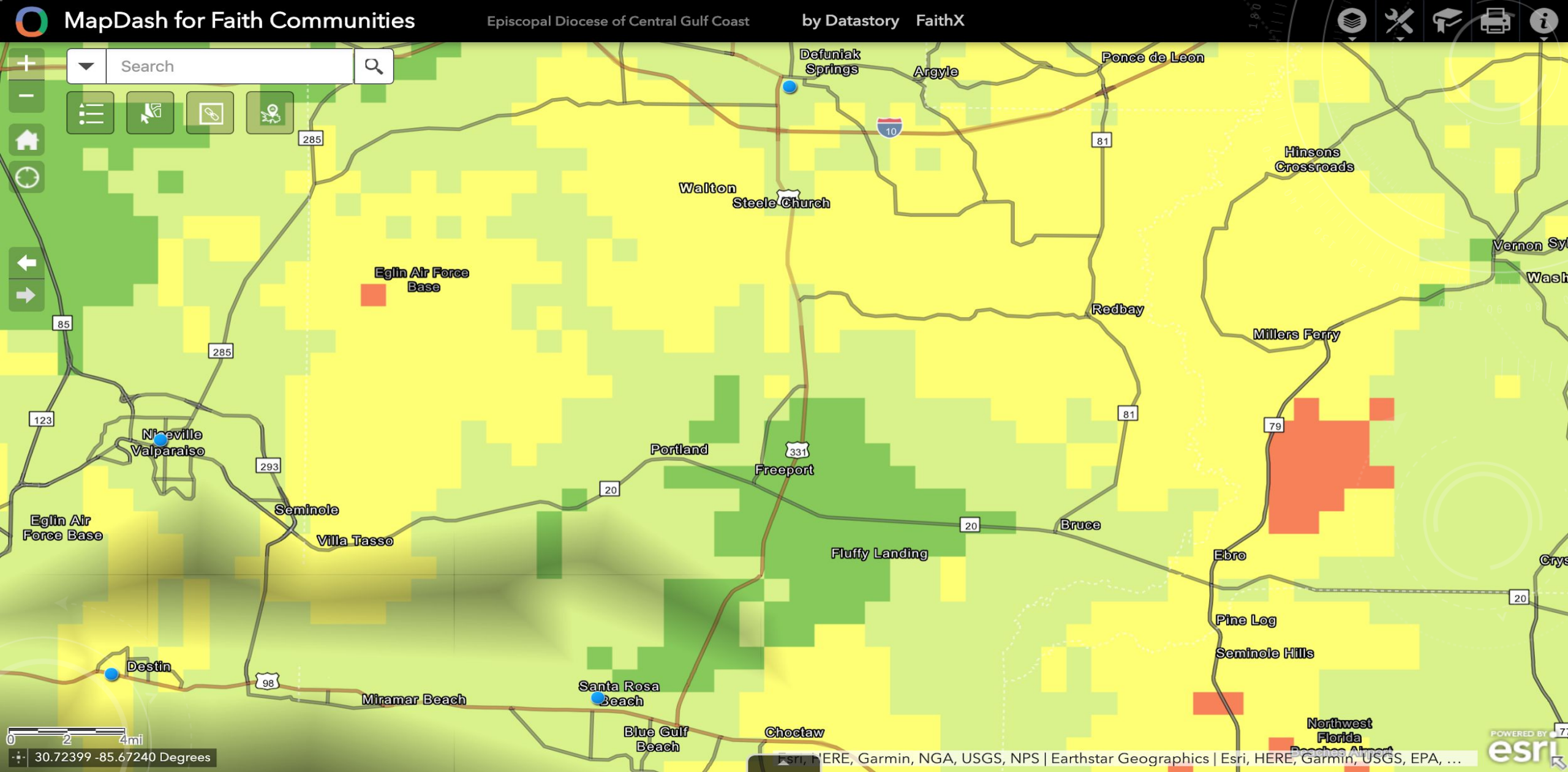
URL: diocgc.missionaltoolbox.org

User ID: diocgckammy

Password: Tallahassee2018



Diocesan Missional Opportunity Index



Example of Missional Opportunity: New worship center in Freeport

Opportunity in the Episcopal Diocese of the Central Gulf Coast

Epiphany Church and Nativity Church.

Analysis: Opportunity for team ministry between Epiphany, Nativity, and St Michael's churches

Freeport-Fluffy Landing (CLICK HERE)

Area of Moderate (trending toward High) MOI at the intersection of the 15-min Drive Times of Christ the King and St. Agatha's

Analysis: Potential opportunity for team ministry between Christ the King and St. Agatha's, or for a new congregation

Missional Engagement in Low MOI Areas

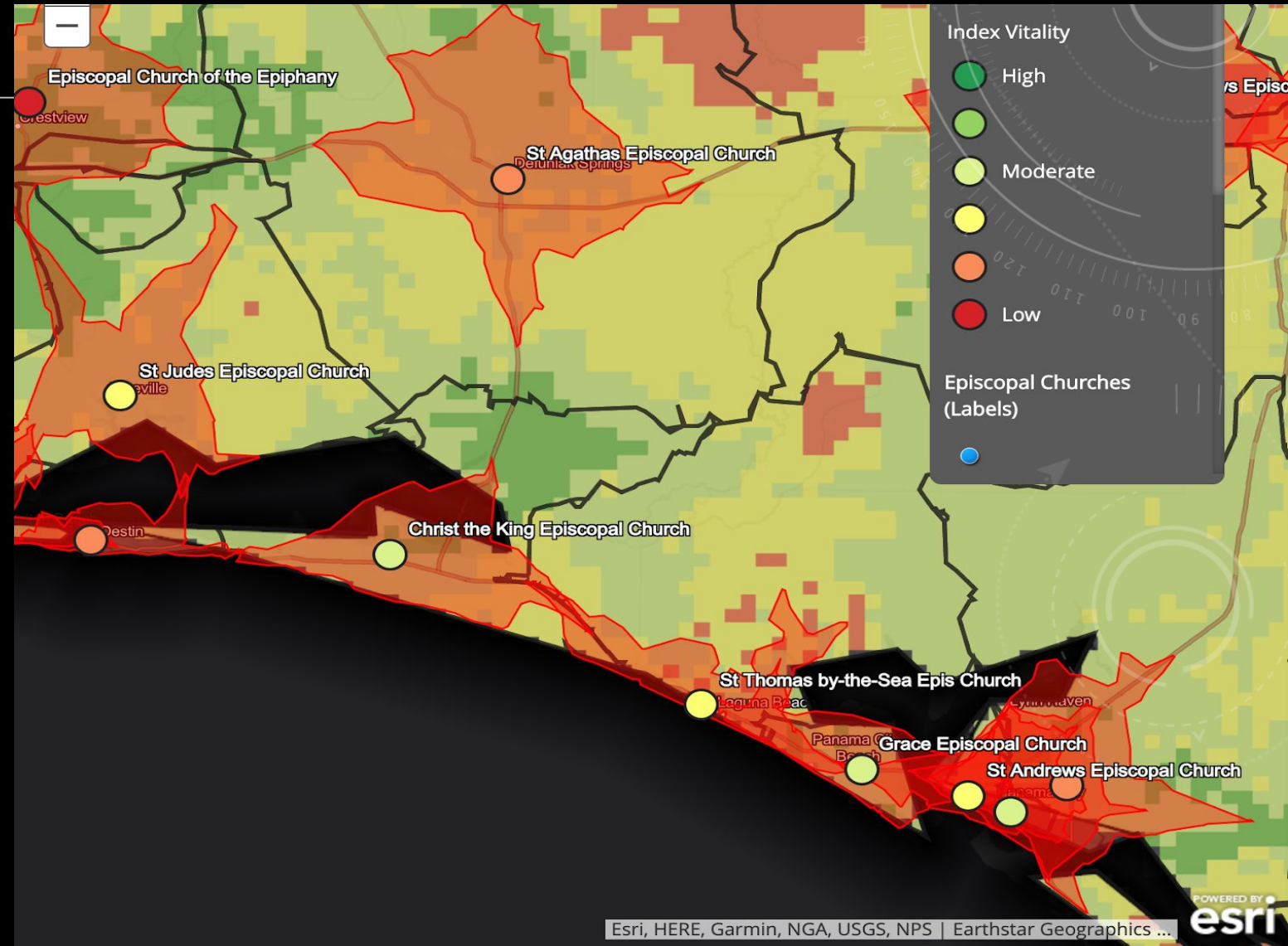
Jackson-Monroeville-Damascus-Brooklin-Paul-South (CLICK HERE)

Large swath of Low MOI across the northern border of the diocese.

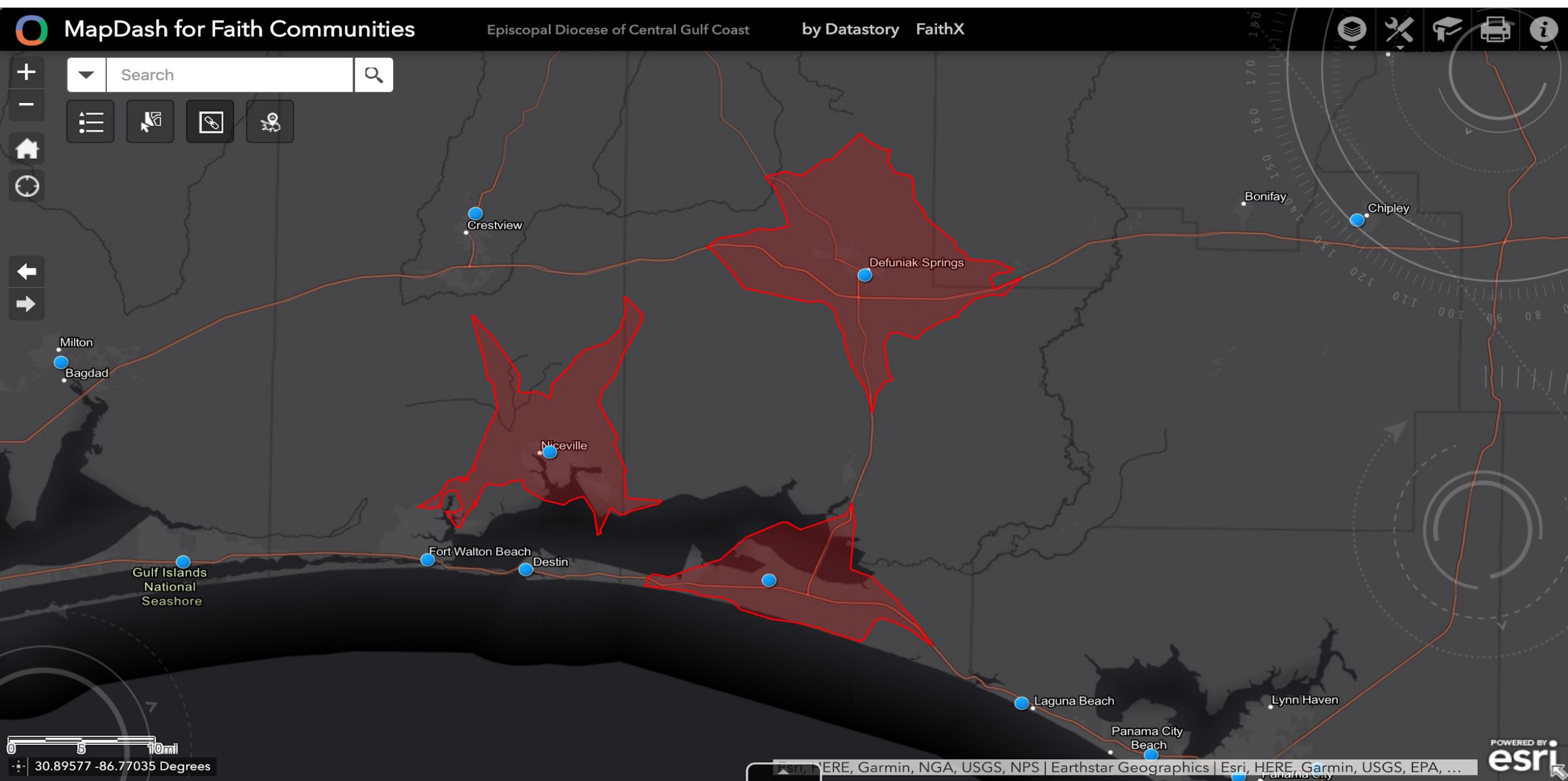
Analysis: Traditional congregations won't work here – will need to experiment with new models of ministry

Explanatory Note

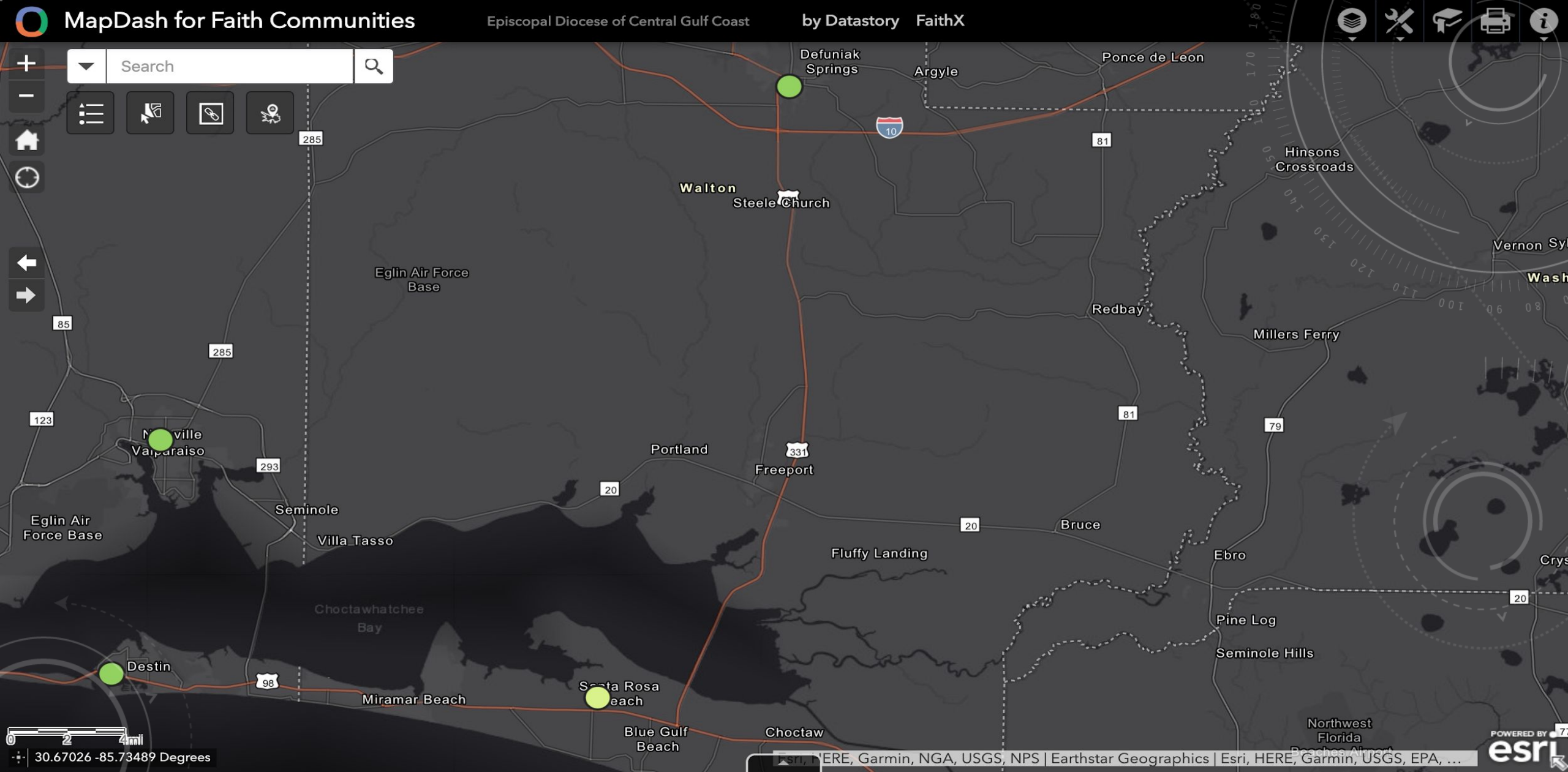
If congregations are located within areas with a low (red) MOI score, this does not necessarily mean the congregation should



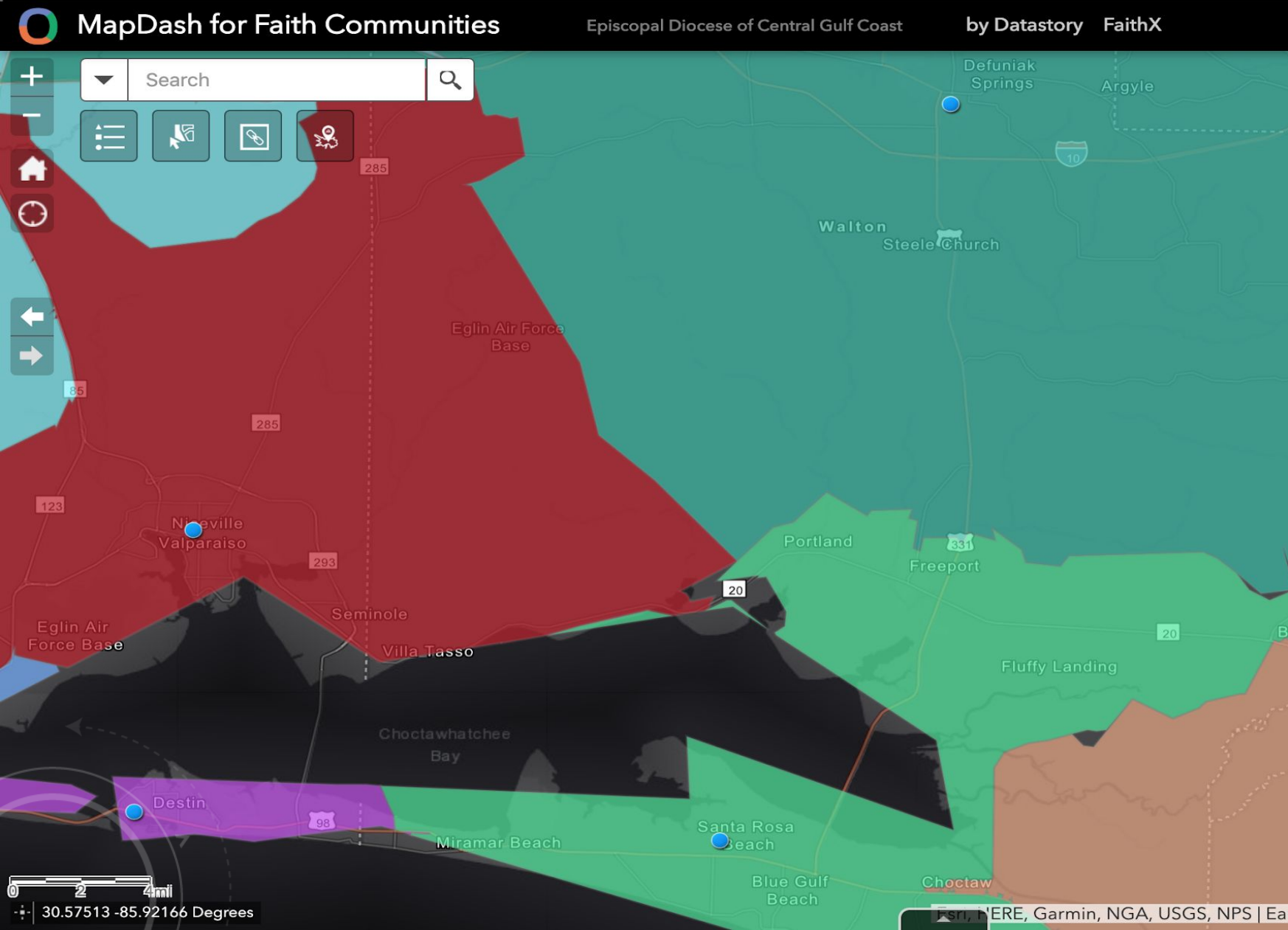
Regional 15-Minute Drive Time



Regional Sustainability-Vitality Margins



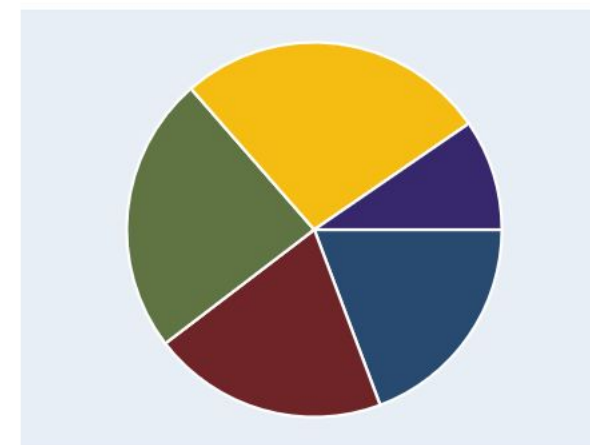
Regional Mission Webs



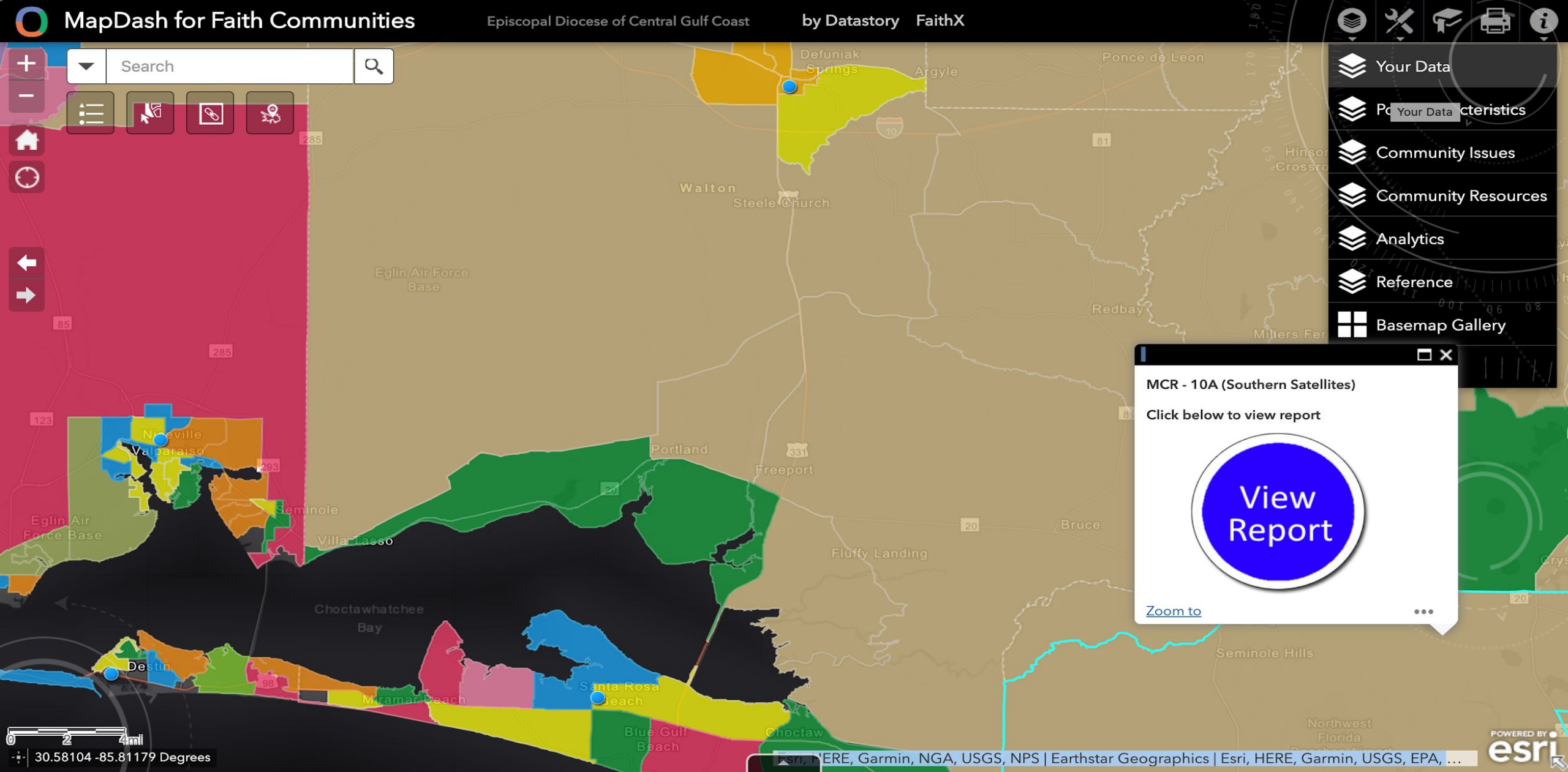
Tradeweb for Christ the King Episcopal Church

| | |
|---------------------------------|--------|
| 2017 Total Population | 26,068 |
| 2022 Total Population | 30,793 |
| 2017-2022 Growth/Yr: Population | 3.39 |
| 2017 Median Household Income | 58,062 |
| Generation Z | 5,027 |
| Millennials | 5,298 |
| Generation X | 6,245 |
| Silent Greatest | 2,498 |

Generational Pie Chart



Regional Missional Lifestyles



Missional Context Report

MCR_Segment_10A_Southern_Satellites_(Rustic_Outposts).pdf

1 / 1



MAPDASH™ FOR FAITH COMMUNITIES Missional Context Report

Esri Tapestry Segment 10A: Southern Satellites (Rustic Outposts)

Communications and Technology

Preferred External Channels: Satellite TV (Country Music Television), Radio (country music), magazines (hunting/fishing, home repair), newspapers.

Preferred Internal Channels: Telephone, direct mail.

Tech: Late adopters.

Education/Formation

Educational Level: 40% have completed high school, 41% have completed college. Plan adult formation programs accordingly.

Household Description: Median Age: 39.7, Average Household Size: 2.65. Predominantly married couples without children, with a number of multigenerational households. Plan adult formation programs accordingly.

Children by Age Range: Right around national average in numbers of all grade ranges. Plan children's formation accordingly.

Hospitality/Fellowship

Orientation: Tend to expect socially-oriented fellowship.

Leadership/Doership Skills Set

Occupational Skills: Mostly Office, Sales, Production: people and hands-on skills.

Opportunities: Consider recruiting for people-related and hands-on ministries.

Neighborhood Issues

Diversity: Little diversity, few minorities: White 84.7%, Hispanic 8.2%, Black 7.9%, Other 3.4%, Multiple 2.0%, Native American 1.5%, Asian <1.0%.

Housing: Almost 80% are homeowners (single family and mobile).

Economic: Income is about nine-tenths of median. Net worth is almost at median.

Outreach

Orientation: Concerned with financial issues.

Options: May want to set aside funds for financial assistance.

Stewardship/Finance

Median Household Income: \$44,000 (about 90% of median).

Median Net Worth: \$70,000 (about 99% of median).

Capacity for Giving. Lower than average ability to give and tend to be frugal.

Theological/Political Orientation

Conservative: As a whole, this population tends to exhibit clear theopolitical preferences.

Worship

Style: Likely to prefer traditional worship.

SUGGESTIONS FOR NEXT STEPS:

1. RECRUIT A SMALL TEAM OF 5-8 PEOPLE FROM YOUR CONVOCATION OR CONGREGATION TO BRAINSTORM LOOKING COMMUNITY NEEDS/RESOURCES FOR A MISSIONAL ENGAGEMENT PROJECT AND PLAN A KICK-OFF EVENT WITH KAMMY
2. HOST SERIES OF COMMUNITY BUILDING EVENTS; ENGAGE EPISCOPAL MEMBERS IN THE AREA IN SOME KIND OF COMMUNITY BUILDING, STORYSHARING EVENT WITH THOSE WHO ARE NOT CHURCH MEMBERS WITH MISSIONAL ENGAGEMENT COACHES

CONTACT INFORMATION - THE REV. KAMMY YOUNG

kammy@diocgc.org | 904-556-1634 |